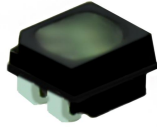


P1.86 Indoor 320x160mm Soft Flexible LED Module

Specification

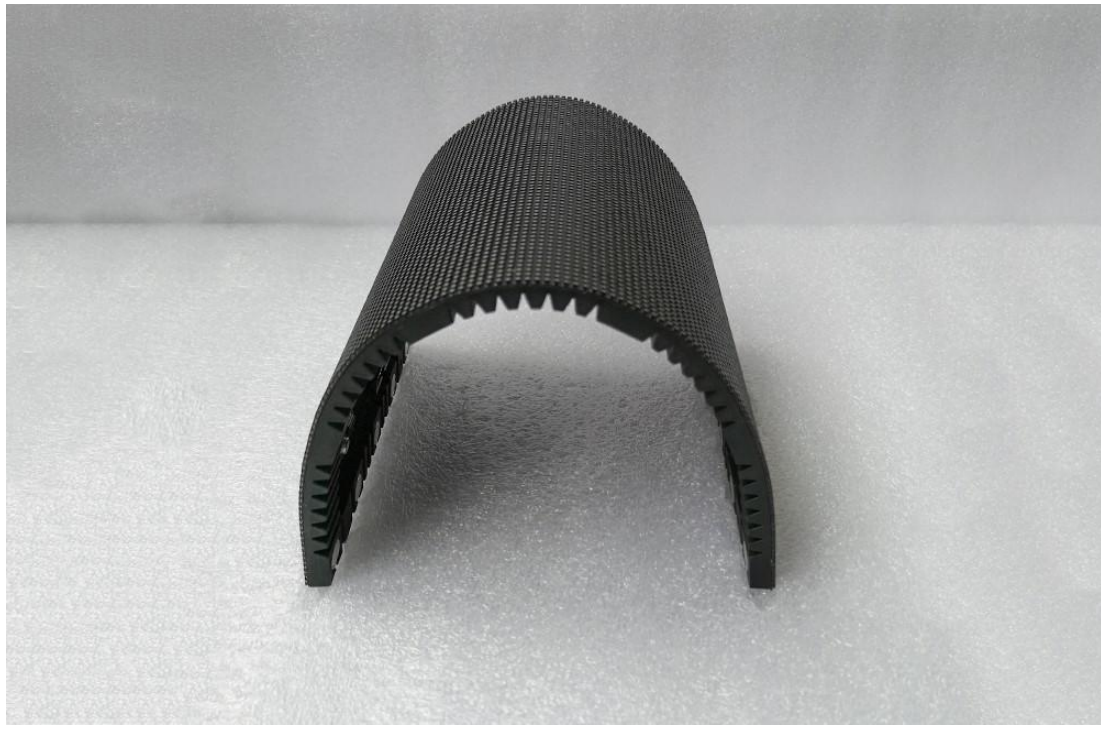
Model No.: **P1.86-ISF43S-SMD1515-172x86-E**

LED Lamp Specification



Color	Package	Intensity	Viewing Angle	Wavelength	Testing Conditions
Red	SMD1515	38-50mcd	120°	618-623nm	25°C,8mA
Green		150-195mcd	120°	519-523nm	25°C,5mA
Blue		19-25mcd	120°	467-471nm	25°C,3mA

Module Photo





Module Parameter

Pixel Pitch	1.86mm
Pixel Configuration	SMD1515
Density	288,906 pixels/m ²
Module Resolution	172pixel(L) * 86pixel(H)
Module Dimension	320mm(L) * 160mm(H) * 8.5mm(D)
Driving Mode	Constant current, 1/43 duty

Electricity Parameter

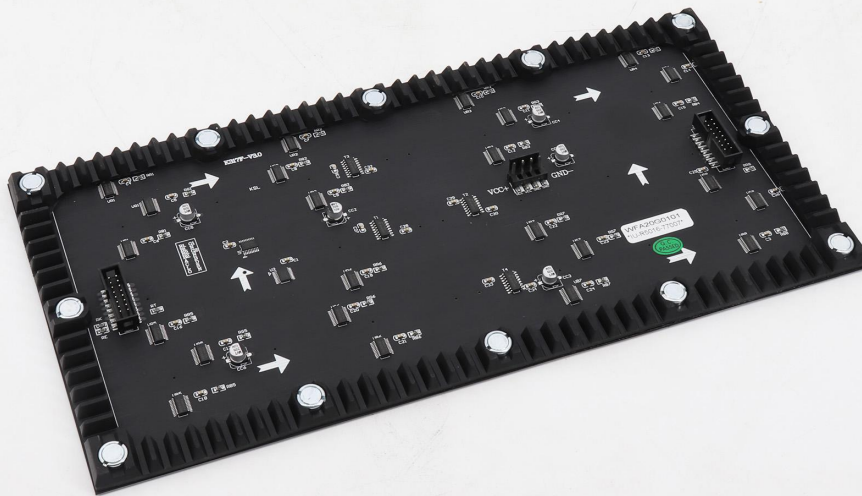
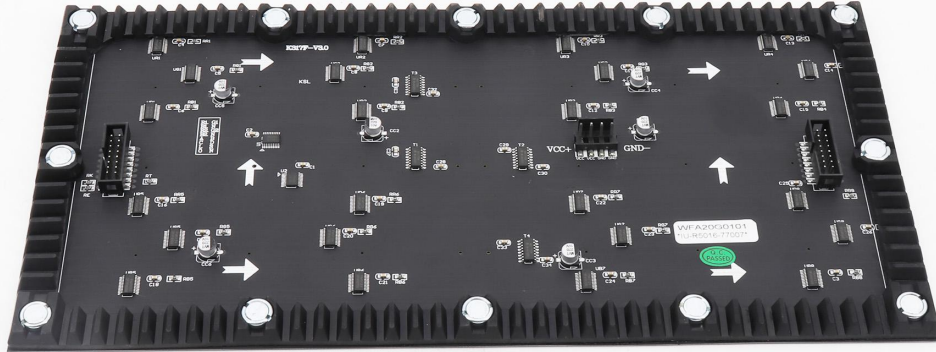
Optical Ratings	
Brightness	≥800 CD/m ²
Viewing Angle	120°(Horizontal); 120°(Vertical)
Best Viewing Distance	≥2m
Gray Grade	14 bits
Display Color	4.4 trillion colors
Brightness Adjustment	100 grades by software or automatically by sensor
Max. Power Consumption	21W

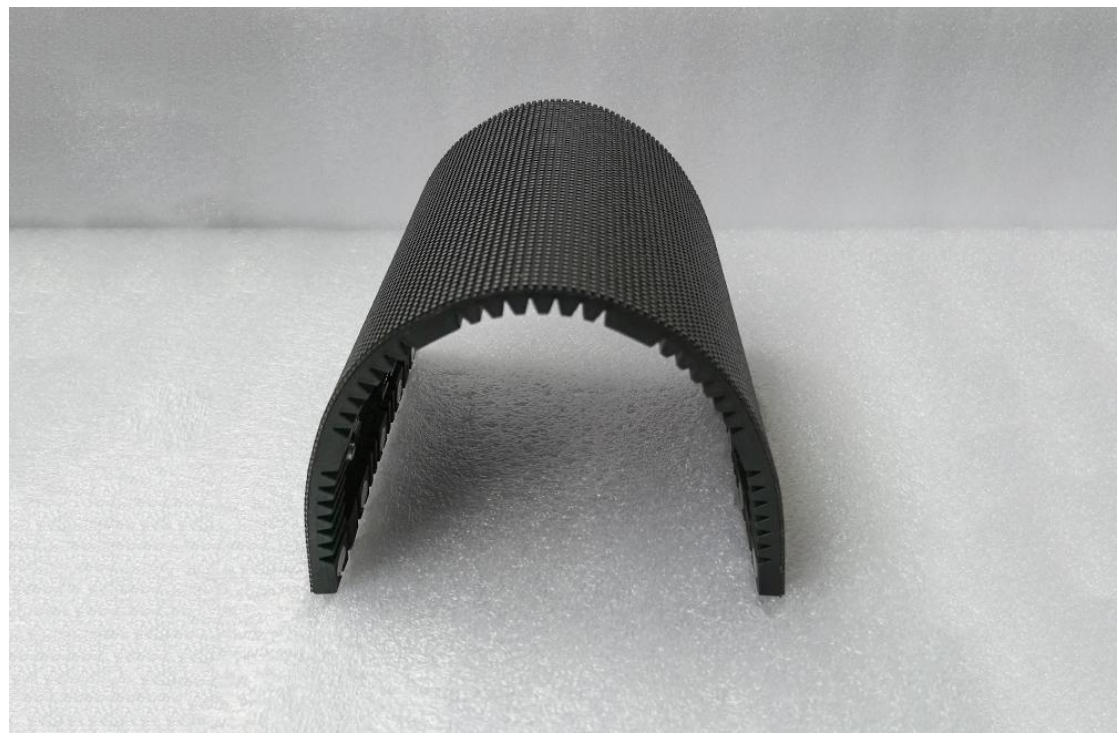
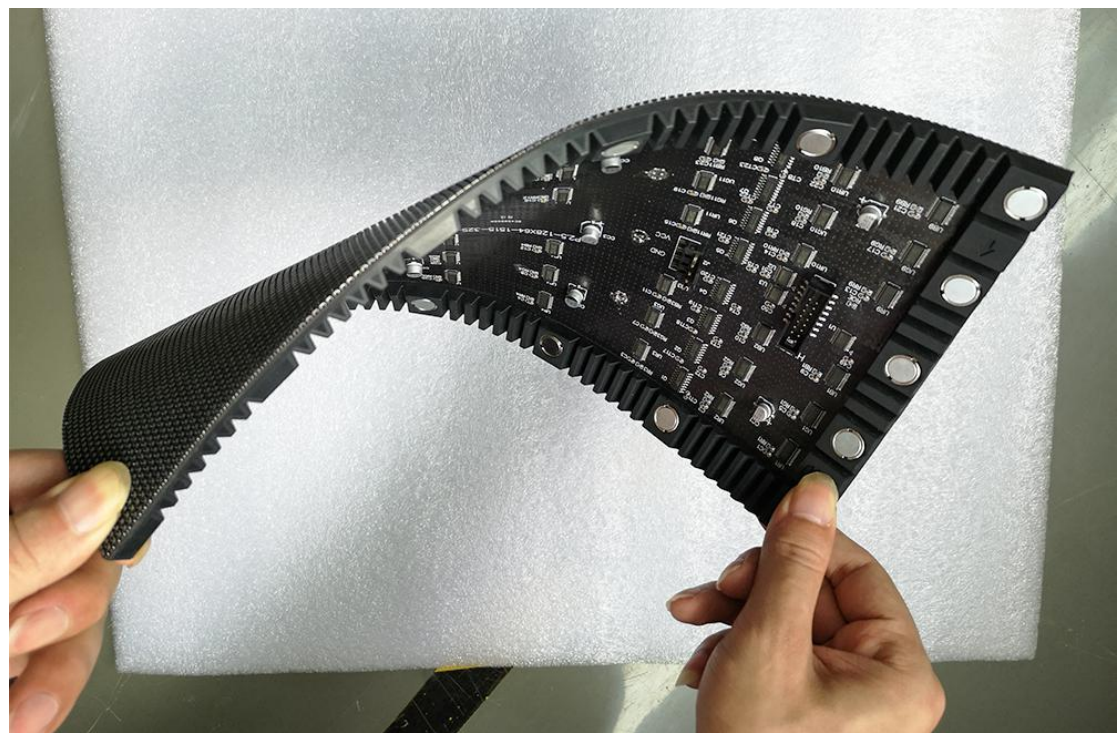
Control System	
Frame Frequency	≥60Hz
Refresh Frequency	≥3,840Hz
Input Signal	Composite Video, S-video, DVI, HDMI, SDI, HD-SDI
Control Distance	100M (Ethernet cable); 20KM (Optical fiber cable)
Support VGA Mode	800*600, 1024*768, 1280*1024, 1600*1200
Color Temperature	5000—9300 adjustable

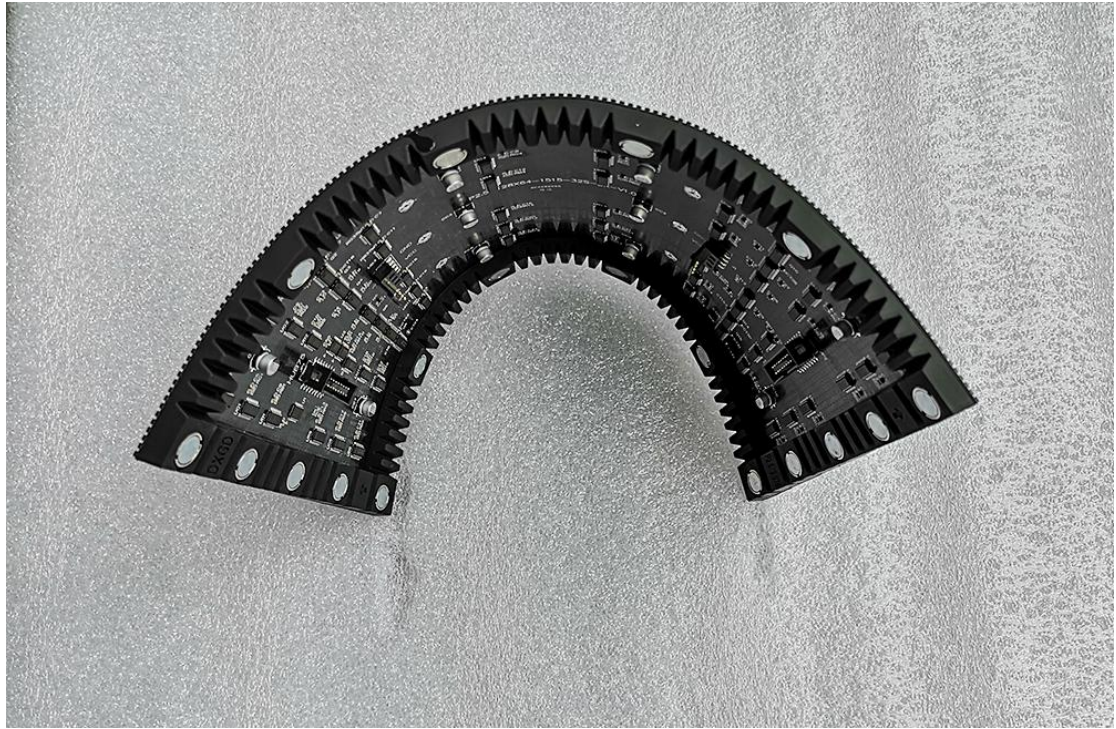
Brightness Correction	Pixel by pixel, module by module, cabinet by cabinet
Reliability	
Working Temperature	-20~+60 °C
Storage Temperature	-30~+70 °C
Working Humidity	10%~90% RH
Lifetime	100,000 hours
MTBF	5000 hours
Continuous Operating Time	≥72 hours
Protection Grade	IP31
Out-of-Control Pixel Rate	≤0.01%

Detail

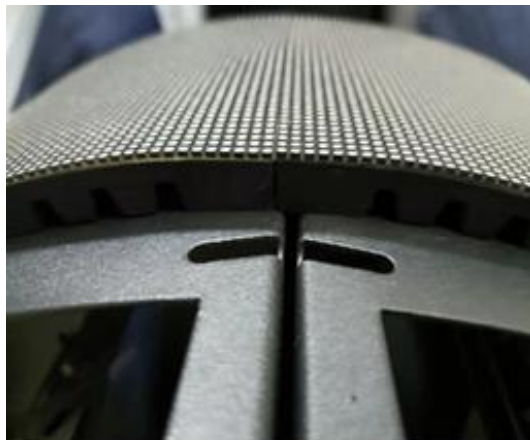
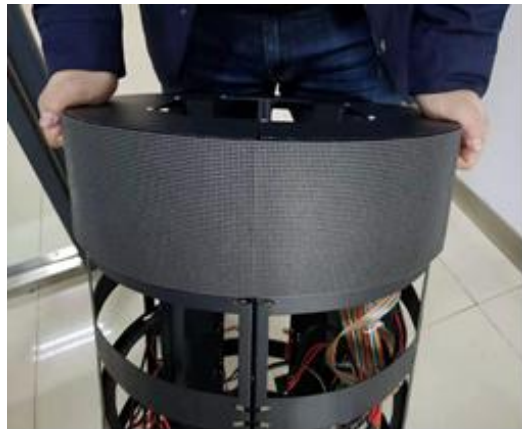








Assembly diagram



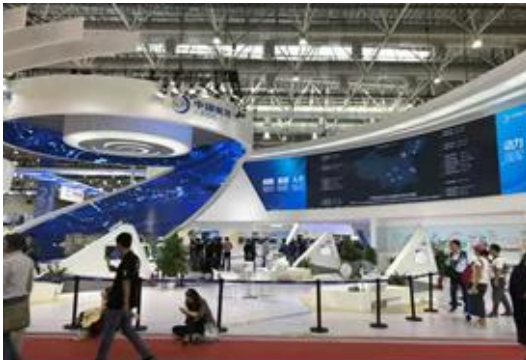
Application

Tel: +86-755-23190947

Website: <https://www.eagerled.com>

E-mail: manager@eagerled.com

Address: Building C, Zhongyu High-Tech Industrial Park, Heshuikou, Matian, Guangming, Shenzhen, China



Package



